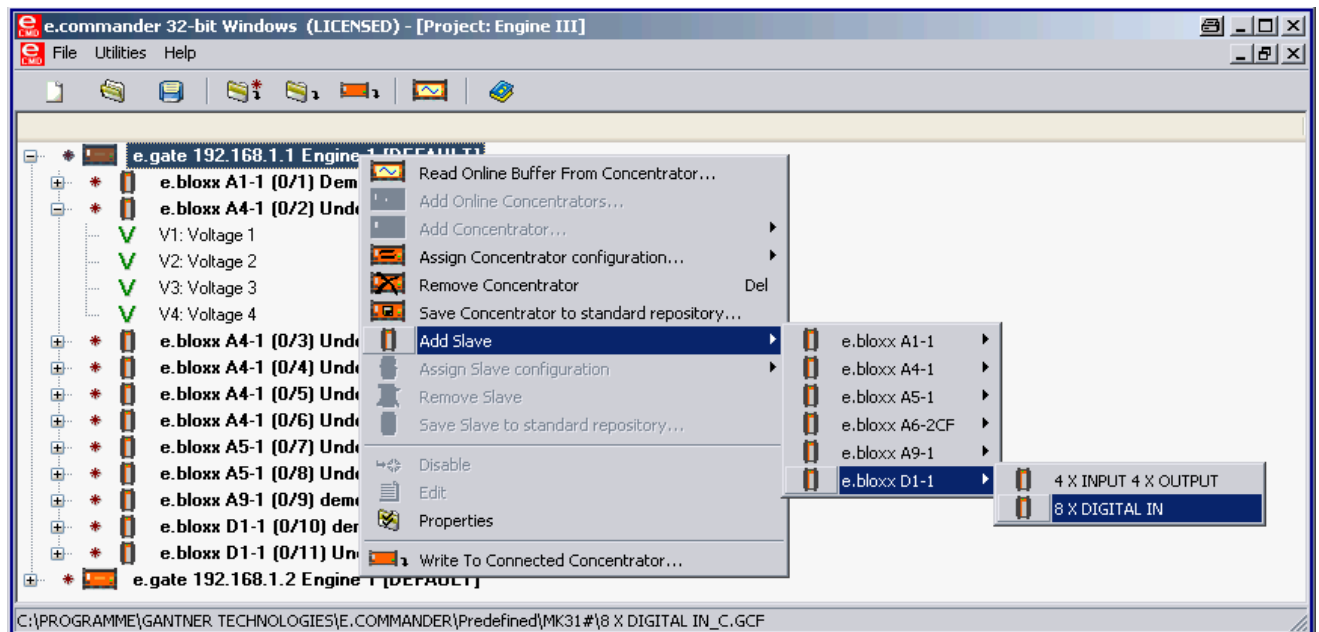




e.commander is a network management and system configuration application for the e.bloxx series of modules, and the various e.series data concentrators. The application runs on Windows® 98, 2000, NT and XP and allows any complex system of e.series data concentrators and e.bloxx modules to be setup and managed with ease.

e.commander utilizes the industry standards of TCP/IP and FTP to discover and manage connected e.series concentrators and e.bloxx modules on an Ethernet network. The robust e.bloxx configuration software ICP 100 is part of e.commander and offers users the same familiar and powerful environment used when working with the e.bloxx modules directly.

The visualisation software Green Eye Reader and Writer is also integrated for data capture and display.



Order Information

Product	Article No.
e.commander	234476

Easy and fast configuration

Single modules up to the complex systems via an explorer like structure

Compatible to all Windows® versions from Win 98

Extensive online-help

Online and offline Mode

Reading of connected systems (online) and creation or modification of projects (offline)

Creation of module templates

Create and save system configurations for standard functions

Display measurements and I/O signals

Online display of values and setting of variables

e.commander Network Management and System Configuration

Start

By starting e.commander three options will be offered:

- Open new project
- Open new project and read online system
- Open existing project

Open Existing Project

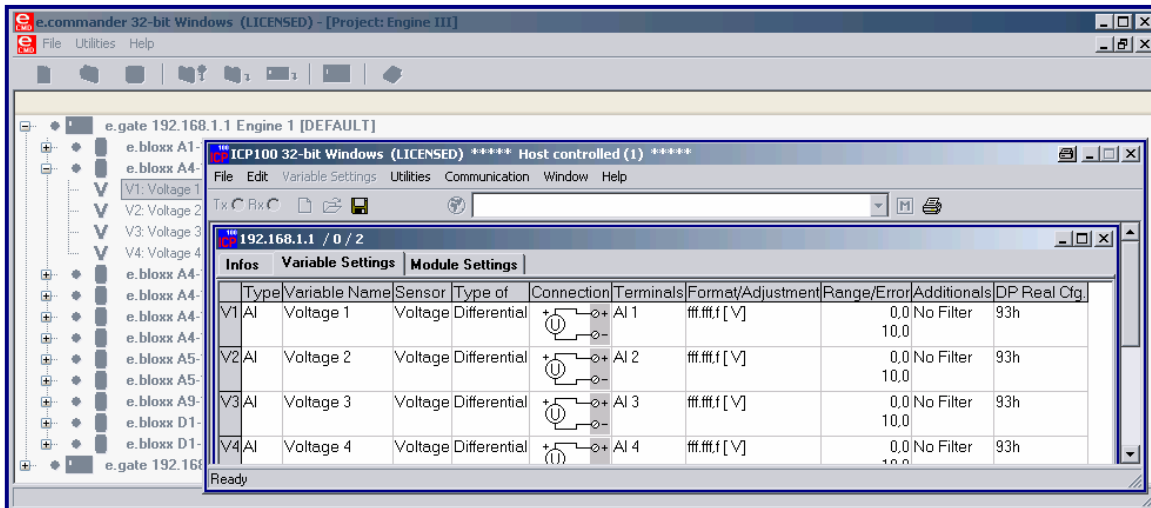
If a difference between a stored project and actual configuration is detected, the user will be informed and asked for additional actions.

Open New Project

The project will be created through addition of data concentrators and e.bloxx modules. Several standard configurations are predefined and more configurations can be defined.

Configuration of Single Modules

The Software ICP 100 is totally integrated in the e.commander. Providing a common way to configure e.bloxx. ICP 100 will start via a double click on one module in the treeview of e.commander.



Configuration of the e.gate and the Interfaces

The configuration of the host and slave interfaces is done with a few simple clicks on the appropriate fields.

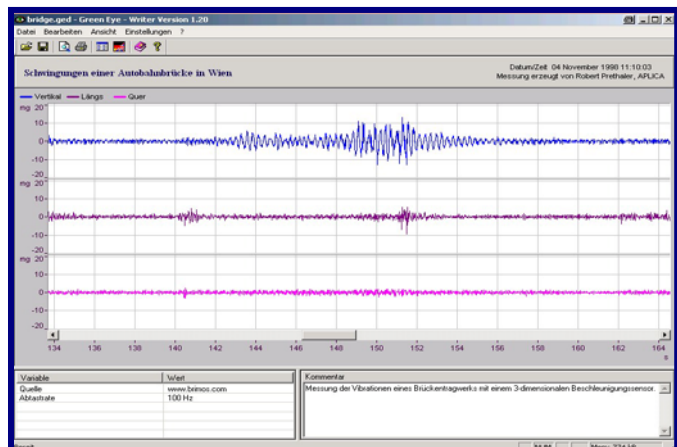
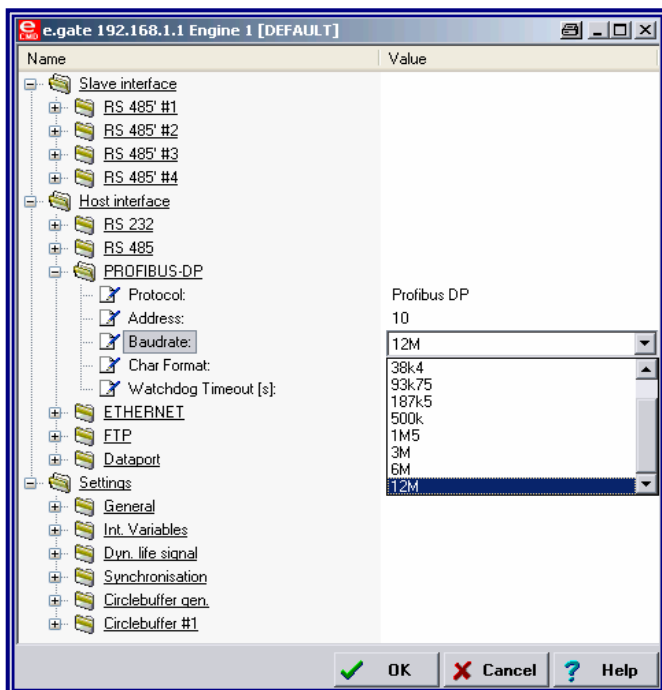
Green Eye - Writer

Green Eye - Writer is an integral component of e.commander. It is a tool for visualization, data exchange, and publishing of measurement data (Excel, etc.).

The measurement data from the e.gate's circular buffer is represented graphically. Zoom functions, measure functions and an extensive array of formatting options will help at the analysis of data.

The resulting GED file can be send to any user, who can analyse the measuring data with the free software Green-Eye Reader.

More information: www.green-eye-data.com



Valid from October 2006. Specification subject to change without notice.
DB_ECOMMANDER_E_10.doc