

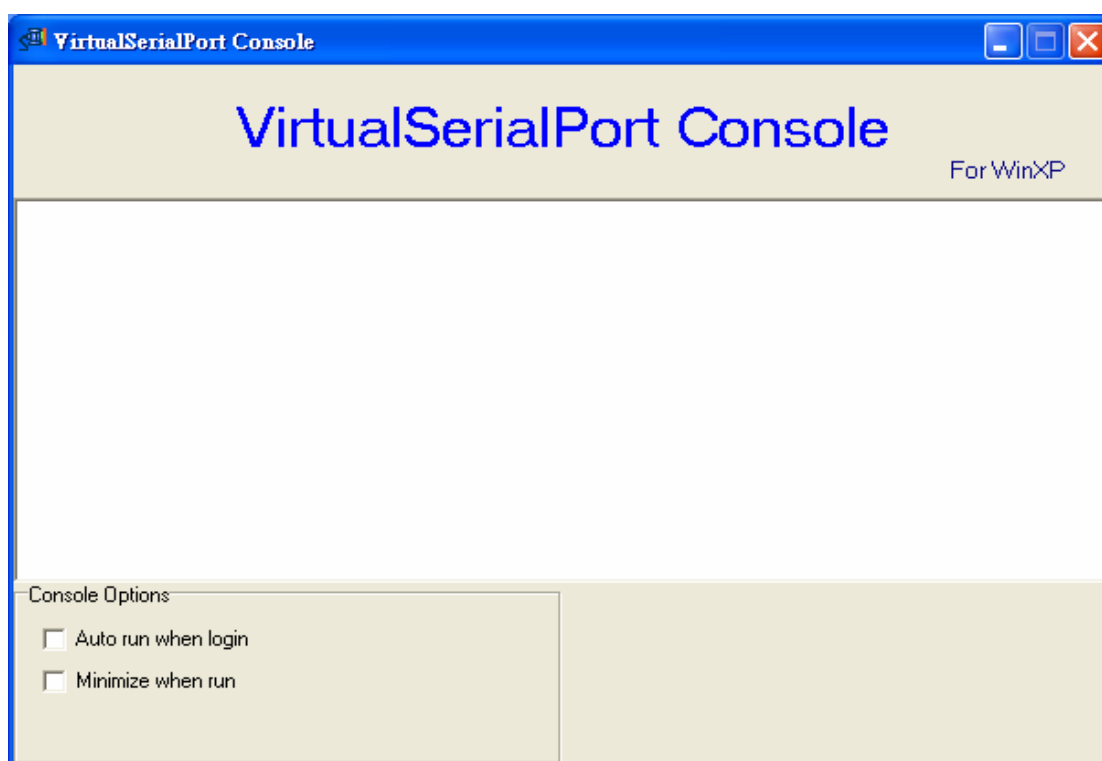
# Virtual Serial Port Driver

## Operation Manual

The VserporctConsole\_2000.exe is for Win 2000.

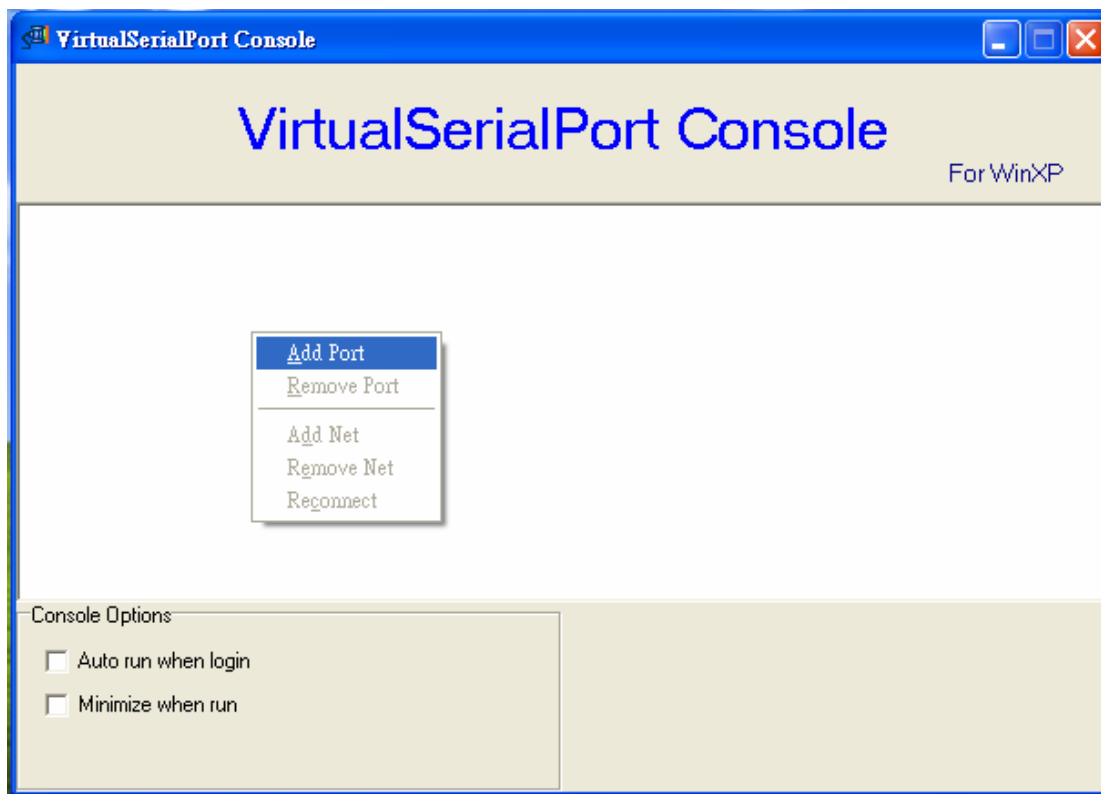
The VserporctConsole\_XP.exe is for Win XP.

1. Run VSerPortConsole\_XP.exe of VirtualSerialPort Console for Win XP. ( figure 1 )



( figure 1 )

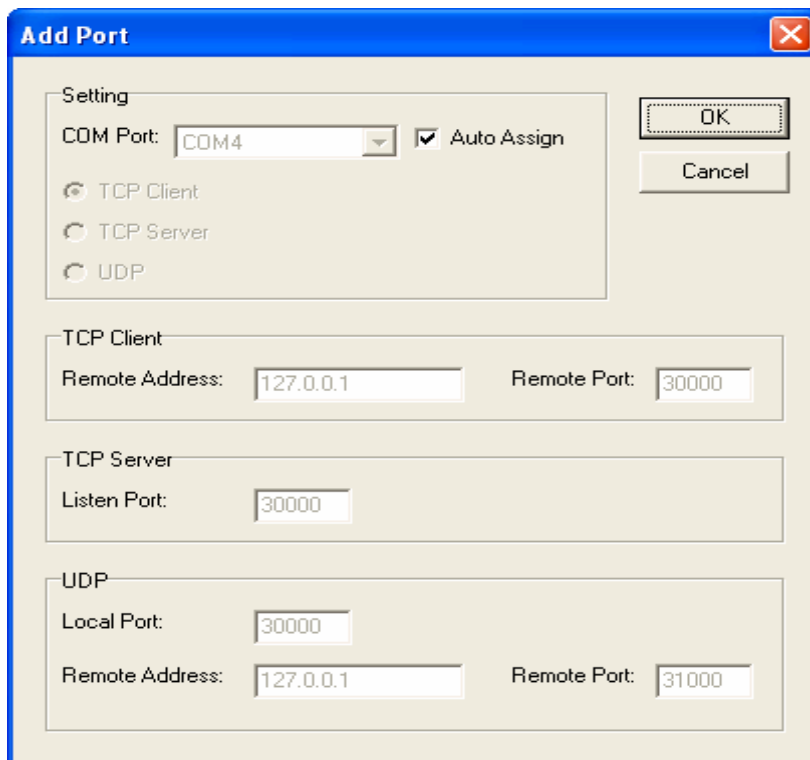
2.If did not add RS232 port , please move mouse to the area of VirtualSerialPort Console and press right key of mouse then select "Add Port" item. ( figure 2 )



( figure 2 )

3. After select “ Add Port” of VirtualSerialPort Console program.

Press “OK” button of the Add port for auto assign . ( figure 3 )



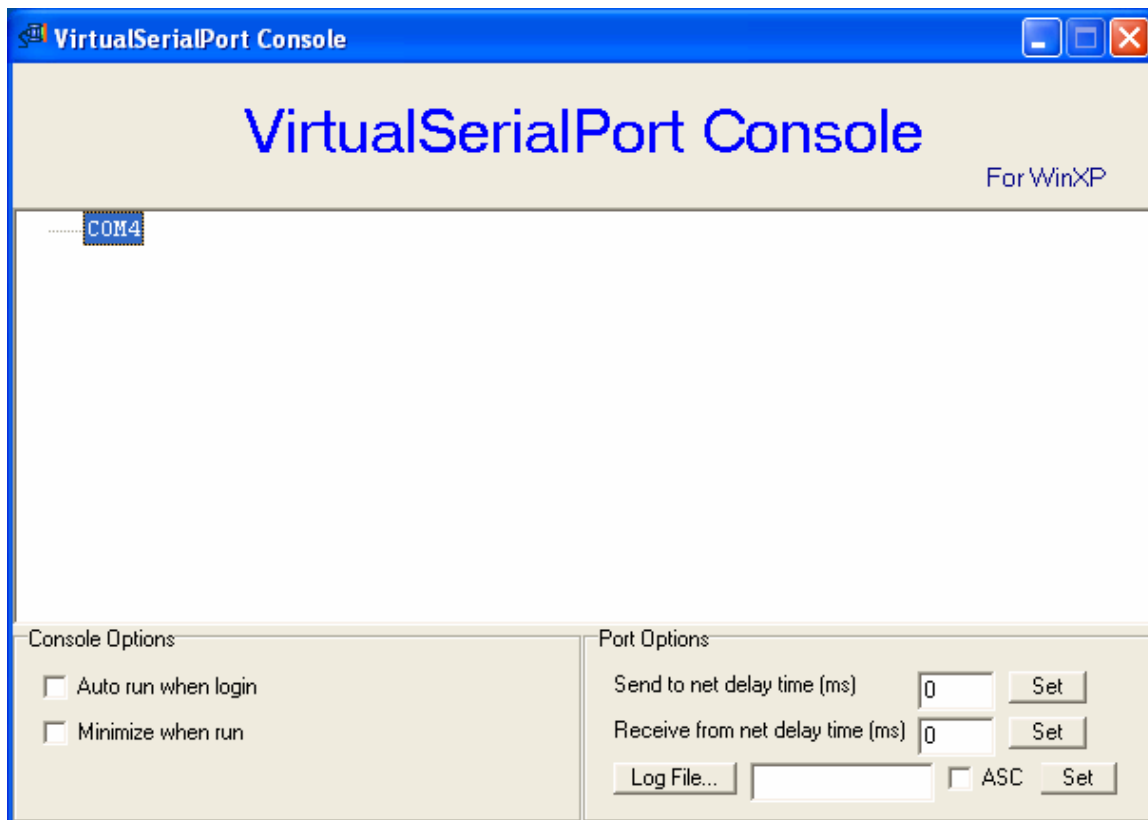
( figure 3 )

4. Press the “Continue Anyway” button of Hardware Installation . (figure 4 )



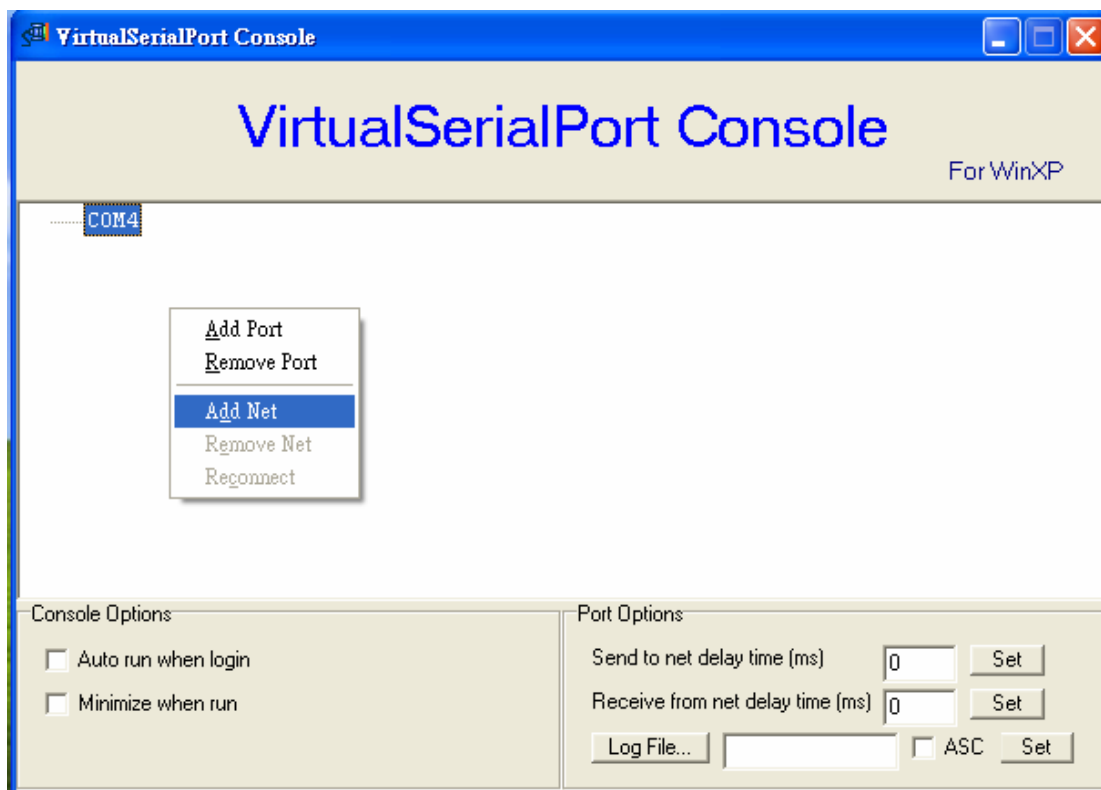
( figure 4 )

5. You will get a new COM port . ( figure 5 )



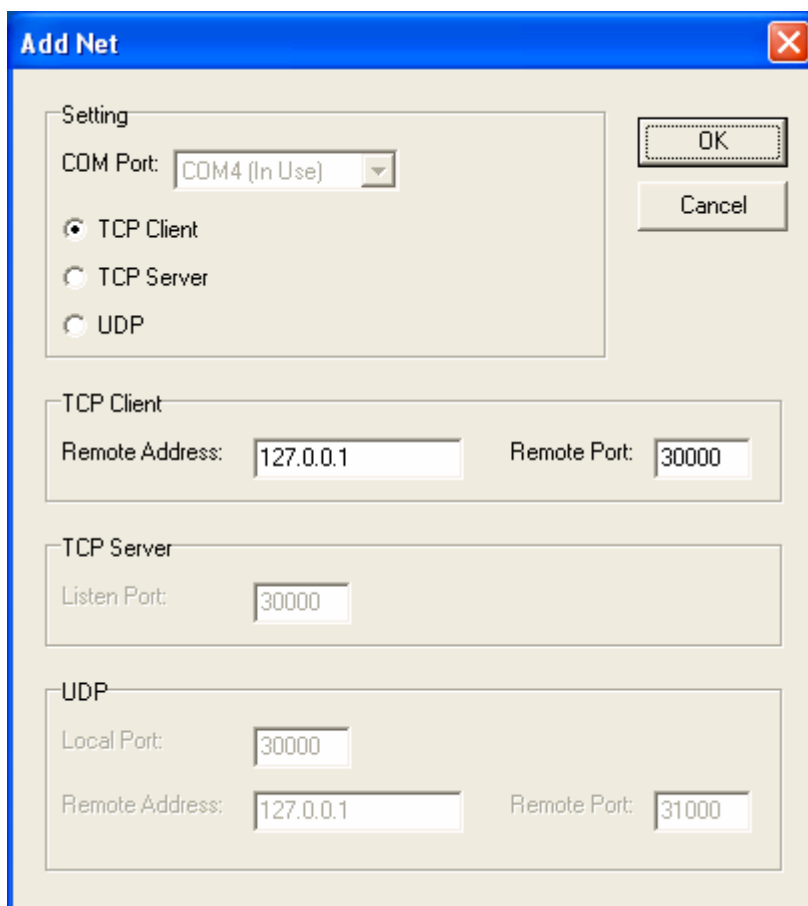
( figure 5 )

6. Press right key of mouse then choose “ Add Net” item of VirtualSerialPort console. ( figure 6 )



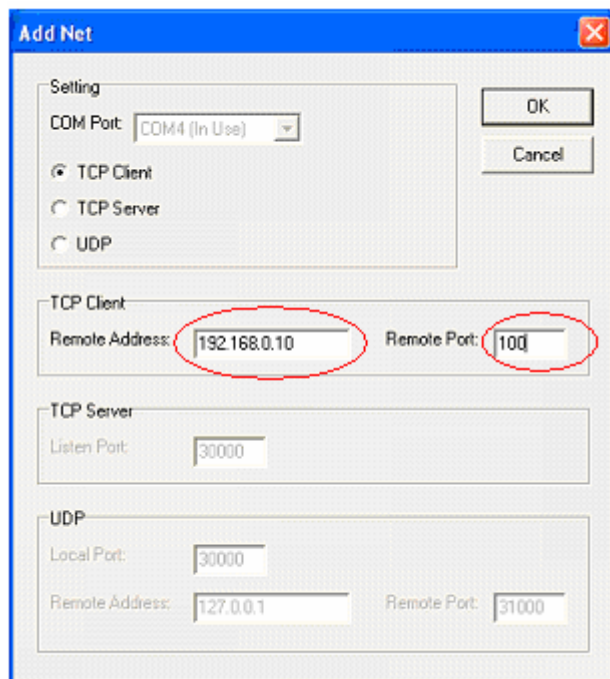
( figure 6 )

7. After select “ Add Net “ item of VirtualSerialPort console. ( figure 7 )

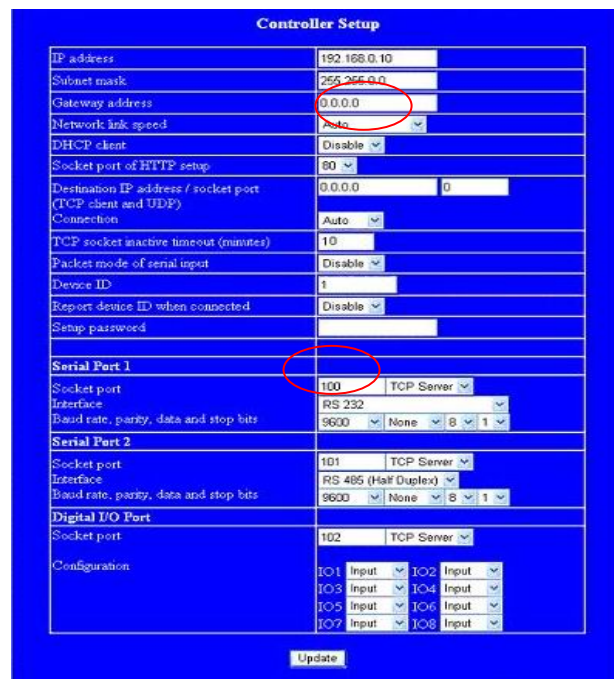


( figure 7 )

8. Change " Remote Address " and "Remote Port" parameters same with IP address and socket port of converter ( figure 8 & 9 )
9. press "OK" button of Add Net.

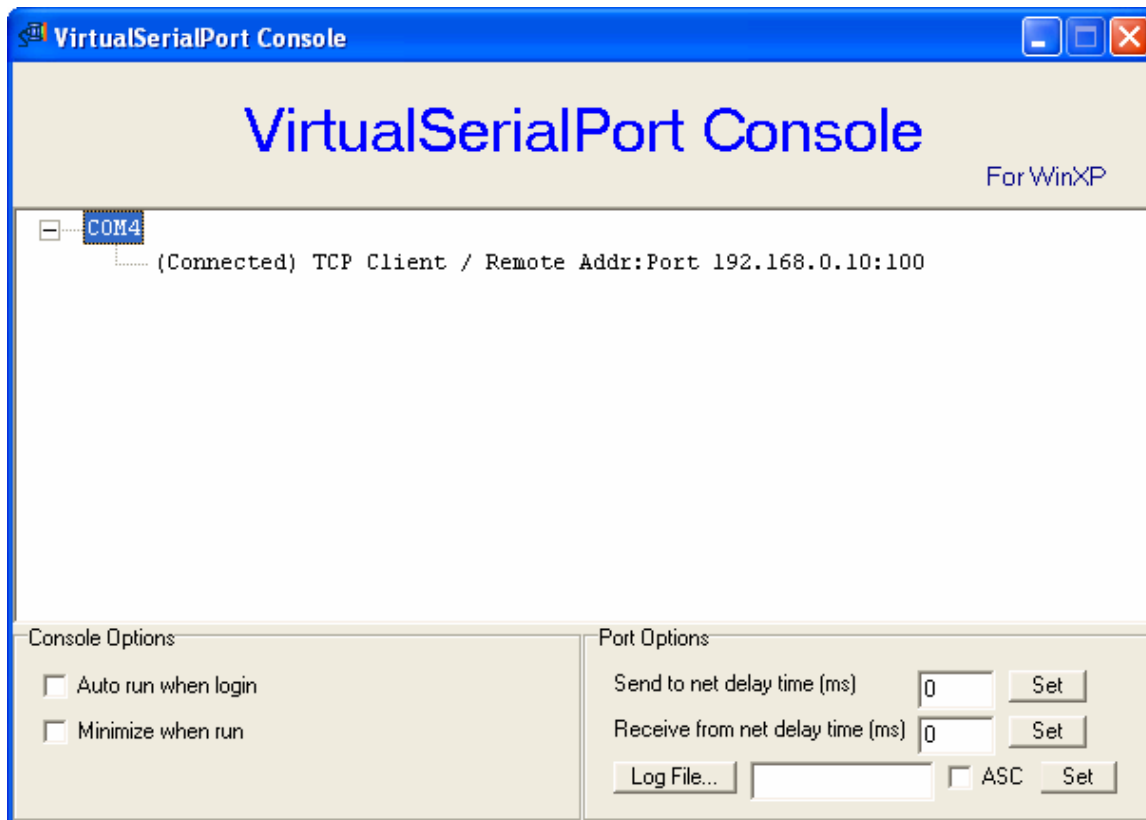


( figure 8 )



( figure 9 )

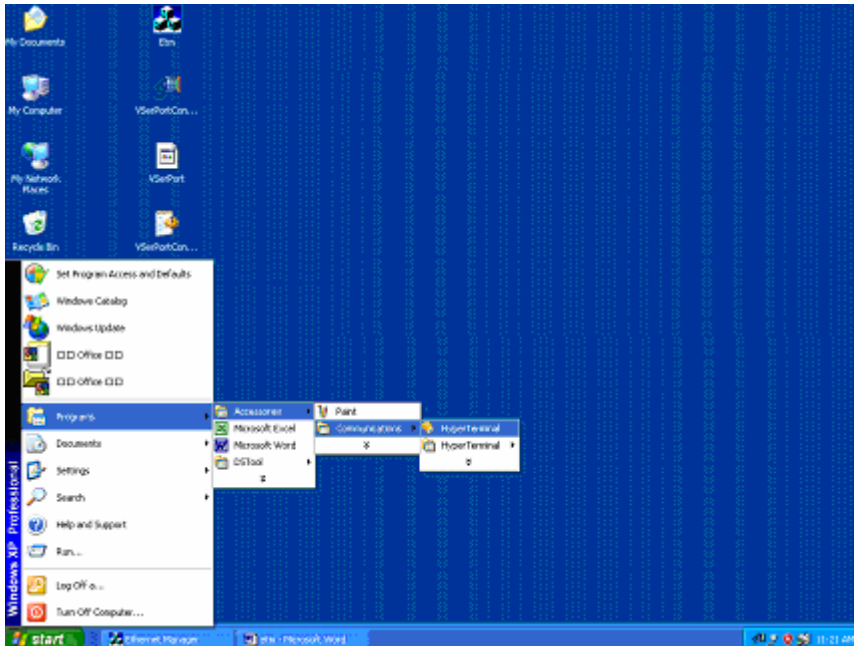
10. The successful screen of VirtualSerialPort Console. ( figure 10 )



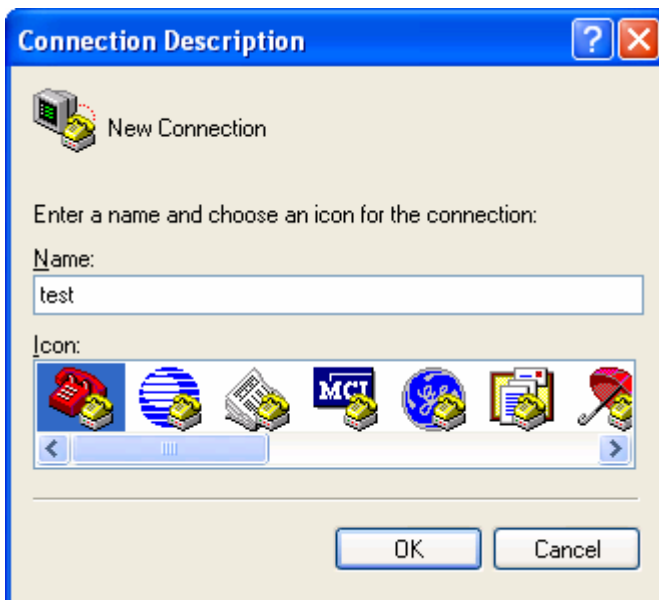
( figure 10 )

# Loop Test Steps

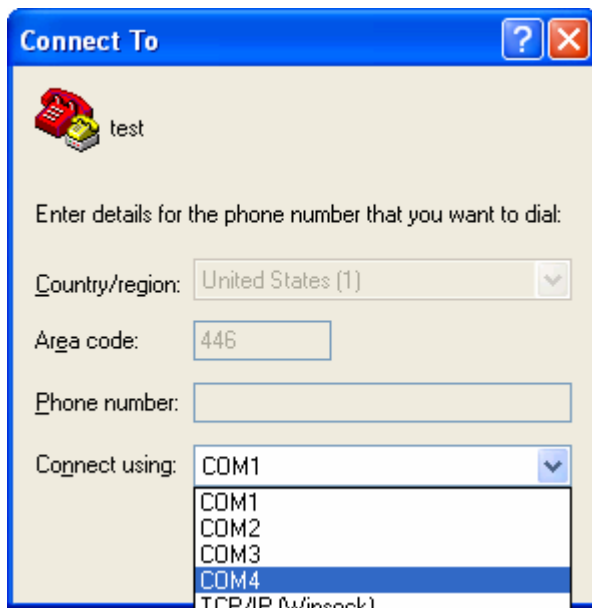
1. Open hyper terminal of Windows.



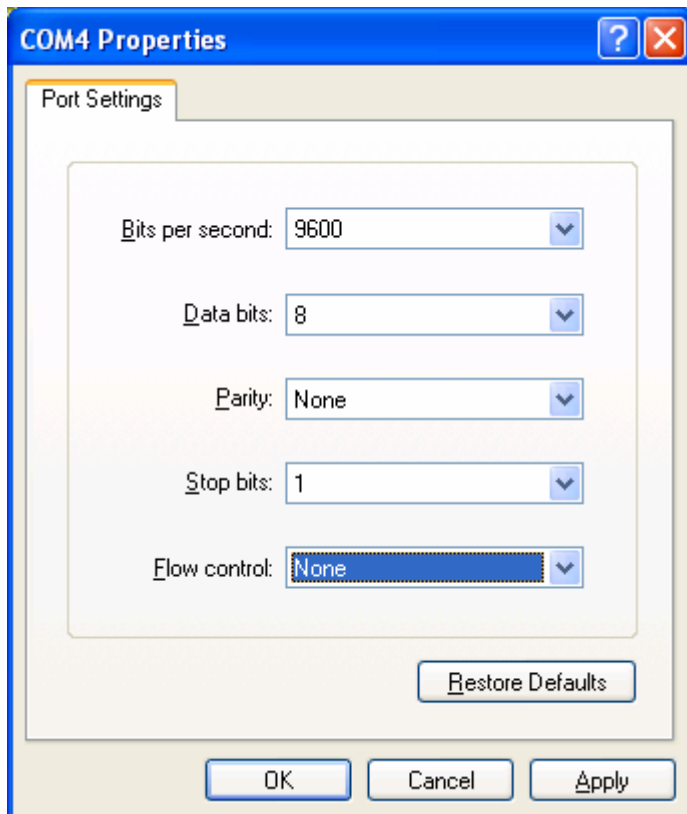
2. Key in the name of hyper terminal. ( Example : test )
3. Select "OK" button of Connection Description.



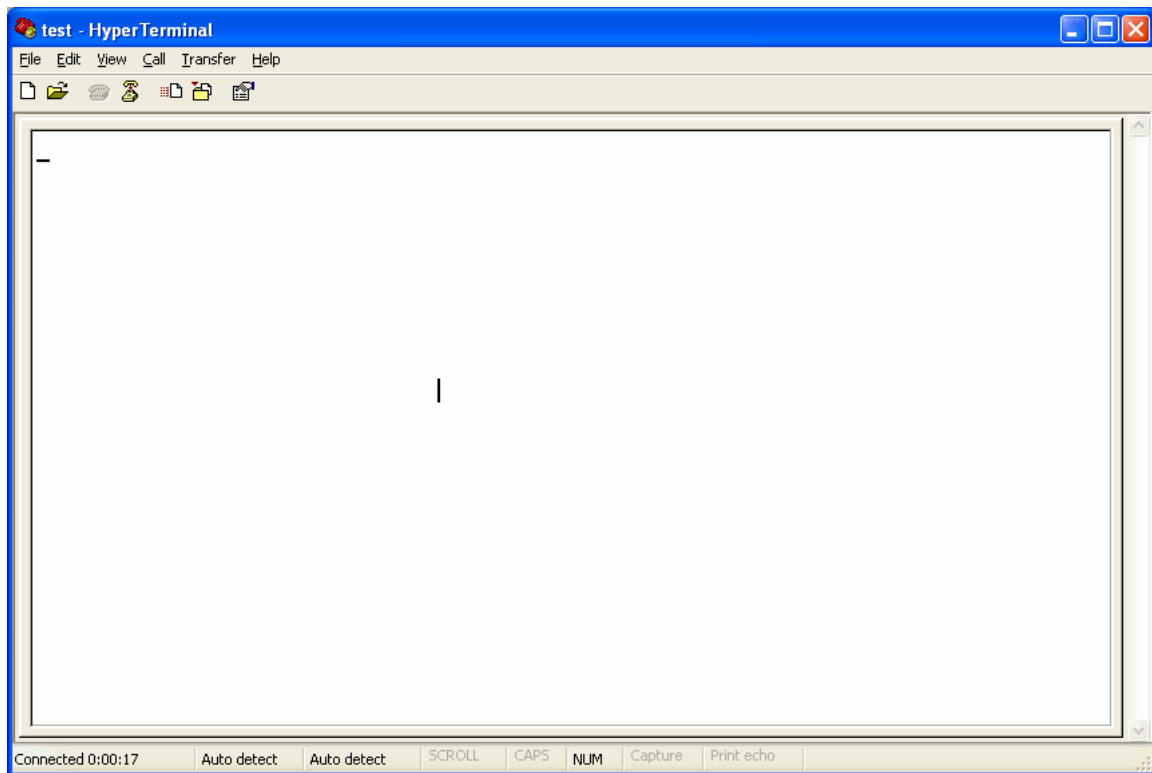
4. Select connect using name as same as Virtual COM 4port. ( Com 4 )
5. Select "Yes" mode of COM4 Properties.



7. Setup the parameters of COM4 Properties.



8. Select “OK” button of COM4 Properties.



9. Please short pin 2 & pin 3 of db9 connector of converter.
10. Please key any words into hyper terminal for test.

