

Signasoft 6000

Software for Strain Gauge Measuring Amplifiers



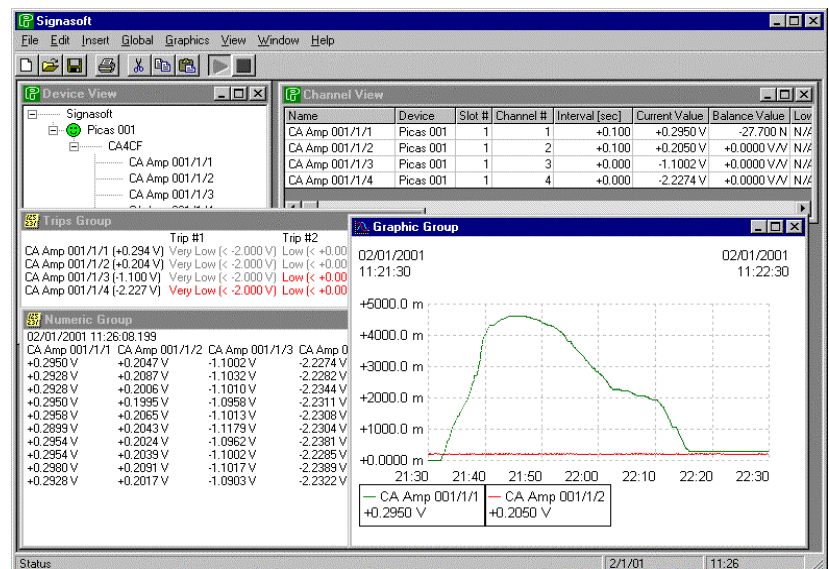
This flyer is a brief introduction to Signasoft 6000. It tells you about its most significant features. During the many years that PEEKEL has been manufacturing generations of software for this typical field, each time again, new features were required by new (or old) customers for new (or old) applications. This always resulted in time-consuming, cumbersome and expensive software labour. To-day's software technology, tools and facilities enable the development of far more structured applications and that is precisely what PEEKEL has conceived here. Using some dedicated software within the hardware, all other application software is now written to such extent that "connectivity" is a primary feature. This gives Signasoft 6000 a headstart for the next decade.

PEEKEL Instruments B.V. at Rotterdam, Holland is one of the oldest manufacturers of strain gauge measuring instrumentation. PEEKEL equipment is in daily use in all major laboratories and research centres for testing aircraft, railway rolling stock, motor vehicles, cranes, bridges, machinery, engines, ships, satellites, etc.



Introduction

With **Signasoft 6000**, **PEEKEL Instruments B.V.** starts a new software approach for dedicated applications in the world of electronic measuring of material properties, such as strain, stress, load, force, displacement, etc. By using PEEKEL's vast experience in computer applications, built up over the last few decades, **Signasoft 6000** is loaded with features, typically needed in this special field. Whereas, up to now, similar software was built as dedicated programs, Signasoft 6000 now is highly modular and offers the user a wide range of interactive possibilities with a host of other, universal technical experimental software packages. The structured use of **ActiveX controls** facilitates a high level of connectivity with to-day's IT concepts.



Configuration

Each individual Picas and/or Signalog 6000 amplifier can be fully configured.

Datalogging

Signasoft 6000 offers full control of automatically logging your measured data.

Graphic display, Table display

You can view your data in a graphical or numerical form.

Limit settings

During certain measuring sessions, you may wish to be alerted or you may want to control the measuring process. For that purpose, you may adjust up to 4 trip-levels for each channel.

ActiveX controls

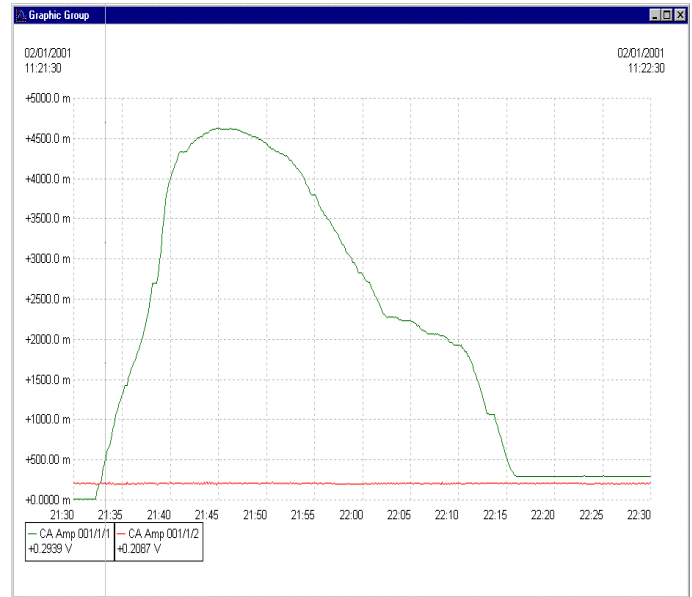
Signasoft 6000's ActiveX controls are also available for use with your other, third party, software packages.

A few details explained:

The following screenshots show the configuration options for CA Amp 001/1/1:

- General Tab:** Bridge volt: +5.0, Bridge: Full, Signal mode: Normal, 1/2 Comp: 240, Polarity: Normal, 1/4 Comp: 350E, Bridge load: +120.0, Calibrate button.
- Sensor Tab:** Sensor Range: +10.0 k, Physic. unit: N, Sensor V/V: N, Meas. Sensor button.
- Strain Tab:** K-Factor: +2.0, Bridge factor: +1.0, Use E-modules: NO, E-Modules: +200.0 k, E-modules unit: N/mm².
- Balance Tab:** R-Balance: -27.701, C-Balance: +233.91, Unit: N, Balance use: YES, Balance button.

Buttons at the bottom: OK, Cancel, Apply, Help.



Configuration

Each individual Picas and/or Signalog 6000 amplifier can be fully configured with its individual parameters for its individual use in your individual measuring system.

Datalogging

Only limited by the physical specifications of your amplifiers connected, Signasoft 6000 offers full control of automatically logging your measured data, at the same time saving this data in dedicated files.

Graphic display

During or after your measuring session, you can view your data in a graph, representing each measurement's behaviour during this session.

Table display

During or after your measuring session, you can view your data in a table, representing each measurement's behaviour during this session.

Limit settings

During certain measuring sessions, you may wish to be alerted or you may want to control the measuring process. For that purpose, you can adjust up to 4 trip-levels for each channel.

ActiveX controls

Signasoft 6000 uses ActiveX controls, which can also be used with your other, third party, software packages.

| Channel View | | | | | | | | | |
|----------------|-----------|--------|-----------|----------------|---------------|---------------|----------|-----------|-------------|
| Name | Device | Slot # | Channel # | Interval [sec] | Current Value | Balance Value | Low Peak | High Peak | Description |
| CA Amp 001/1/1 | Picas 001 | 1 | 1 | +0.100 | +0.0125 V | -27.700 N | N/A | N/A | |
| CA Amp 001/1/2 | Picas 001 | 1 | 2 | +0.100 | +0.2065 V | +0.0000 V/V | N/A | N/A | |
| CA Amp 001/1/3 | Picas 001 | 1 | 3 | +0.000 | -1.0973 V | +0.0000 V/V | N/A | N/A | |
| CA Amp 001/1/4 | Picas 001 | 1 | 4 | +0.000 | -2.2308 V | +0.0000 V/V | N/A | N/A | |



PEEKEL INSTRUMENTS B.V.
 Industrieweg 161, 3044 AS ROTTERDAM, NL
 TEL. (+31) (010) 415 27 22
 FAX (+31) (010) 437 68 26
 E-mail: sales@peekel.nl
www.peekel.nl

PEEKEL INSTRUMENTS B.V.
 Bergmannstrasse 43, D-44809 Bochum
 TEL. (+49) (0234) 904 1603 / 1604
 FAX (+49) (0234) 904 1605
 E-mail: peekel@t-online.de
www.peekel.de